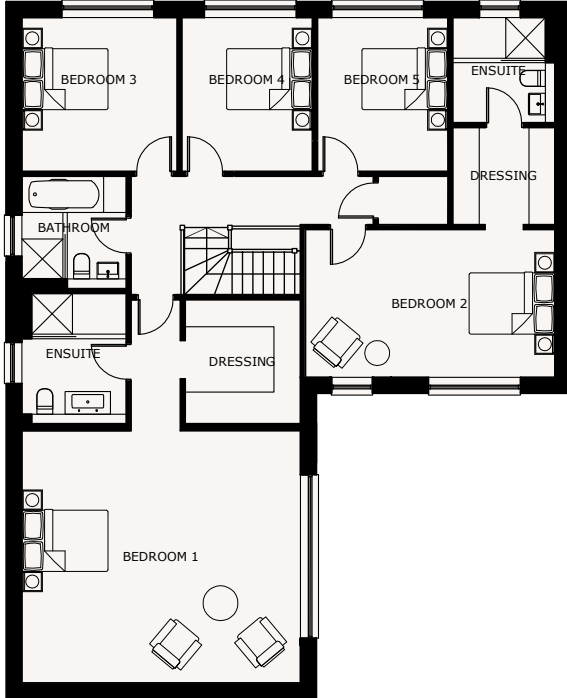
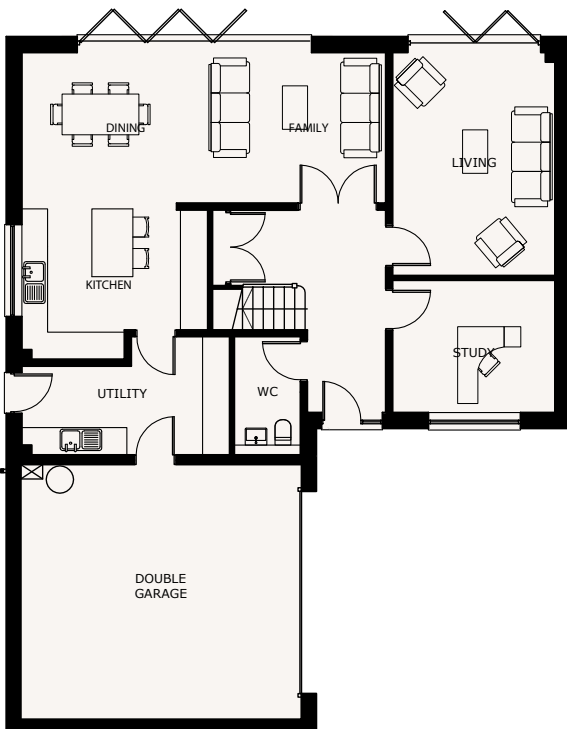


Royal Park

The Yately



Bedroom 1	20'2" x 18'4"
En suite 1	7'7" x 9'5"
Dressing 1	8'4" x 9'0"
Bedroom 2	18'1" x 10'9"
En suite 2	7'5" x 7'8"
Dressing 2	7'5" x 7'1"
Bathroom	7'7" x 8'2"
Bedroom 3	11'3" x 11'2"
Bedroom 4	9'6" x 11'2"
Bedroom 5	9'6" x 11'2"



Kitchen	13'6" x 11'4"
Dining/Family	26'5" x 10'11"
Living	11'9" x 16'2"
Study	11'9" x 9'7"
Utility	15'1" x 8'7"
WC	4'10" x 8'7"
Double garage	20'4" x 18'6"

PLEASE NOTE: drawings may not be to scale and are for identification purposes only and do not form part of any contract. Hartford Homes reserves the right to amend the layout and scale without prior identification or consent of any third party. Furniture is not supplied.