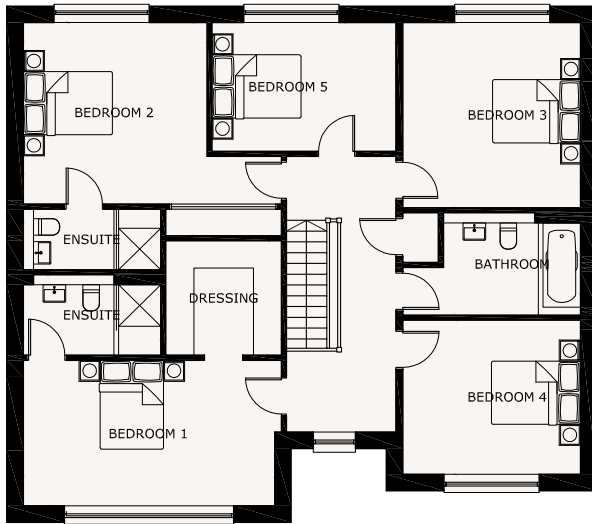
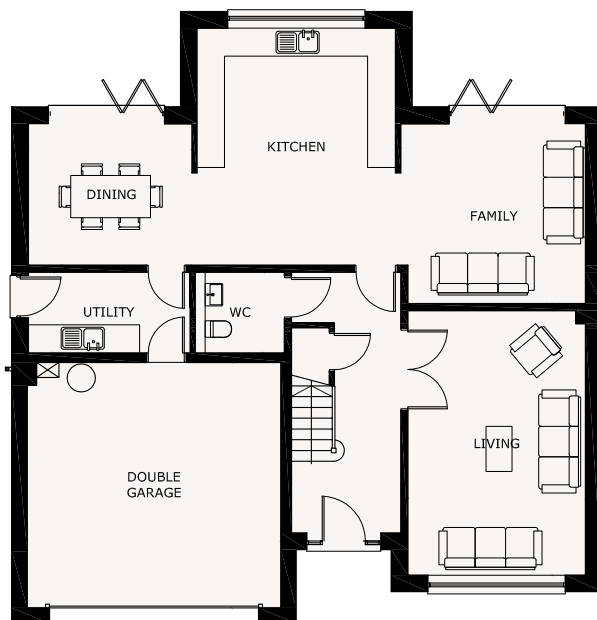


Royal Park

The Berkley



Bedroom 1	17'7" x 10'3"
En suite 1	9'8" x 5'8"
Dressing	8'1" x 8'0"
Bedroom 2	18'1" x 14'11"
En suite 2	9'8" x 4'3"
Bedroom 3	12'5" x 13'0"
Bathroom	12'5" x 7'2"
Bedroom 4	12'5" x 10'10"
Bedroom 5	12'11" x 9'0"



Kitchen	13'11" x 16'7"
Dining	11'6" x 9'11"
Family	13'0" x 12'7"
Living	12'5" x 18'6"
Utility	11'4" x 5'8"
WC	6'3" x 5'8"
Double garage	17'9" x 17'2"

PLEASE NOTE: drawings may not be to scale and are for identification purposes only and do not form part of any contract. Hartford Homes reserves the right to amend the layout and scale without prior identification or consent of any third party. Furniture is not supplied.