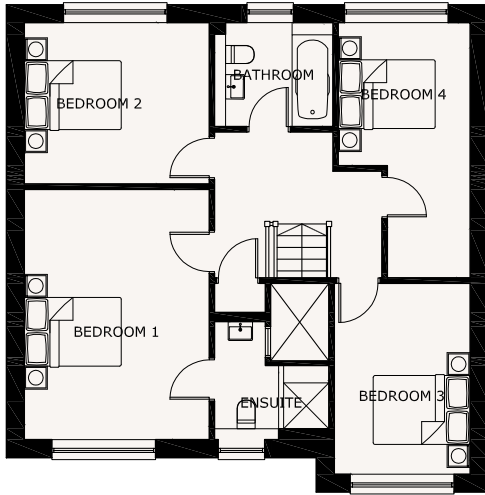
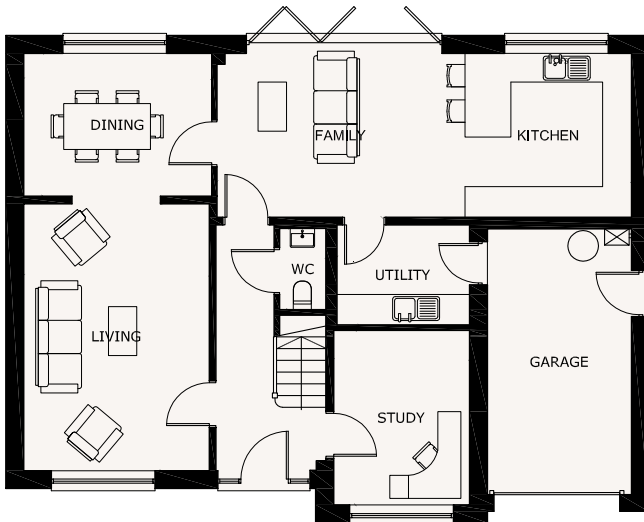


Royal Park

The Oxford



Bedroom 1	11'11" x 16'1"
En suite 1	7'4" x 7'7"
Bedroom 2	11'11" x 10'5"
Bathroom	7'7" x 6'8"
Bedroom 3	8'9" x 12'3"
Bedroom 4	8'6" x 16'5"



Kitchen/Family	26'8" x 10'7"
Dining	12'1" x 9'2"
Living	11'11" x 17'2"
Utility	8'6" x 6'5"
Study	8'9" x 11'3"
WC	3'0" x 5'3"
Garage	9'3" x 17'1"

PLEASE NOTE: drawings may not be to scale and are for identification purposes only and do not form part of any contract. Hartford Homes reserves the right to amend the layout and scale without prior identification or consent of any third party. Furniture is not supplied.